



Flat 6, The Old Mayors House, Abingdon OX14 3QY

Hodsons
...your move, our passion



Flat 6

£169,950

Individual one bedroom apartment offering completely refurbished and superbly presented accommodation over two floors, conveniently situated within the heart of the thriving Abingdon town centre, sold with no ongoing chain.

Location

The Old Mayors House is situated in a delightful location within the heart of the town centre. The property offers a short walk to the thriving town centre's many amenities and the A34 is a short drive providing a quick route to many important destinations north and south including Oxford city centre (circa. 6 miles) and Didcot (circa. 8 miles) with its useful mainline railway station to London Paddington.

Directions what3words – mental.book.keen

From the Hodsons office head towards Abingdon town centre in an easterly direction, the apartments are located above the A-Plan Insurance office, take the first turning on the left on the corner of the Market Place and follow the path around to the back of the building where the apartments can be found clearly indicated by the For Sale board.



- Ground floor entrance with stairs rising to spacious double aspect sitting room/dining room with double doors leading to enclosed balcony
- Re-fitted kitchen offering a stylish selection of floor and wall units complemented by several built in electrical appliances
- Second floor bedroom with re-fitted en suite bathroom with white suite
- Electric storage heating and the property is sold with no ongoing chain
- The property is Grade II listed and there are 250 years remaining on the lease and the service charge is £936.19 per annum

1  bedrooms

1  receptions

1  bathrooms

Council tax band B

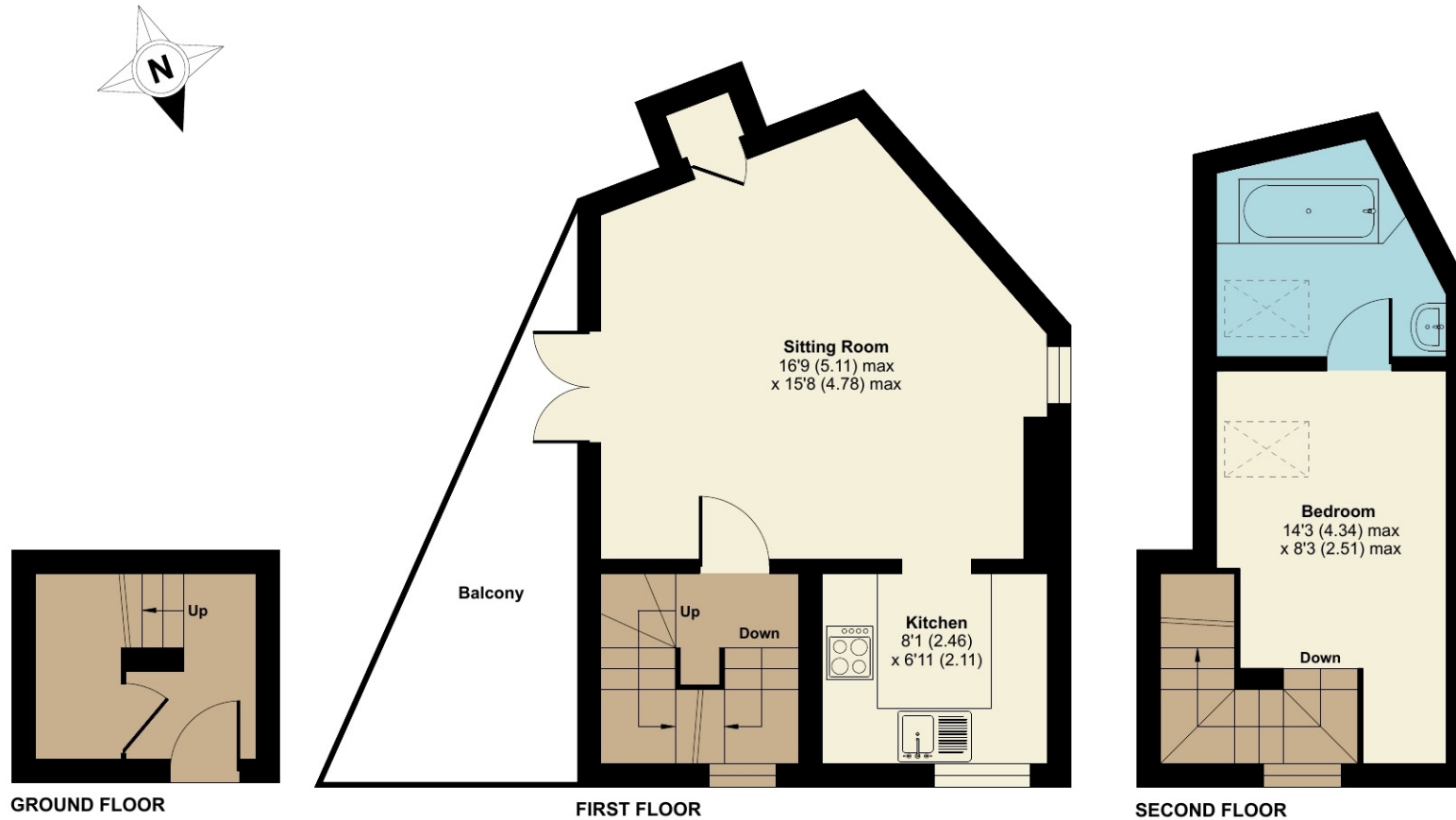
Tenure Leasehold

EPC rating D

The Old Mayors House, Bury Street, Abingdon, OX14

Approximate Area = 574 sq ft / 53.3 sq m

For identification only - Not to scale



Floor plan produced in accordance with RICS Property Measurement Standards incorporating International Property Measurement Standards (IPMS2 Residential). © nchecon 2023. Produced for Hodsons. REF: 1026828

